

FOR IMMEDIATE RELEASE

August 16, 2010

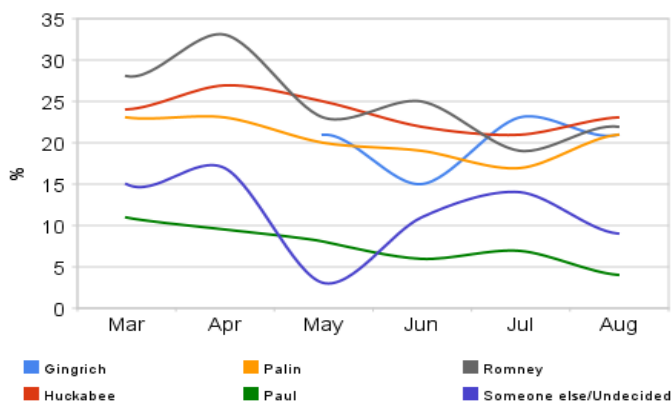
INTERVIEWS: DEAN DEBNAM 888-621-6988 / 919-880-4888 (serious media inquiries only please, other questions can be directed to Tom Jensen)

QUESTIONS ABOUT THE POLL: TOM JENSEN 919-744-6312

Four-Way Tie for 2012 Nom Among National GOP Voters

Raleigh, N.C. – Mitt Romney, Sarah Palin, Newt Gingrich, and Mike Huckabee continue to dominate the early field of potential Republican challengers to President Barack Obama, splitting 87% of the vote, with each getting between 21 and 23%.

Huckabee currently has 23% to Romney's 22%, Gingrich and Palin at 21%, Ron Paul at 4%, and unnamed others at 2%, with 7% undecided. As the below chart shows, the four frontrunners have been converging toward each other in the six months PPP has polled the race, with either Romney, Huckabee, or Gingrich on top in any given month, and the other three bunched close behind, with Palin consistently in third or fourth. Paul's support has gradually declined, and while Romney continues to win many state primaries that will determine the actual delegate counts at the convention, his national support has been eaten into by the entrance of Gingrich and the persistence of Huckabee and Palin.



When asked whether they want one of the five named candidates to be the eventual nominee, 24% said they would like it to be someone else, far higher than the 2% who chose someone else in the horse race, but way lower than the 54% who are happy with their present choices. Despite the push for more conservative party representatives among Tea Party activists this year, 57% of

conservatives are satisfied with one of the four leaders or Paul going head-to-head with Obama in two years. Even so, there is clearly room for someone else to emerge in this ever-shifting slate of candidates.

PPP surveyed 400 national Republican primary voters from August 6th to 9th. The survey's margin of error is +/-4.9%. Other factors, such as refusal to be interviewed and weighting, may introduce additional error that is more difficult to quantify.

If you would like an interview regarding this release, please contact Dean Debnam at (888) 621-6988 or 919-880-4888.



National Survey Results

- Q1** Do you have a favorable or unfavorable opinion of Mike Huckabee?
Favorable.....62% *Not sure*25%
Unfavorable14%
- Q2** Do you have a favorable or unfavorable opinion of Sarah Palin?
Favorable..... 76%
Unfavorable 17%
Not sure 7%
- Q3** Do you have a favorable or unfavorable opinion of Newt Gingrich?
Favorable..... 65%
Unfavorable 19%
Not sure 16%
- Q4** Do you have a favorable or unfavorable opinion of Ron Paul?
Favorable..... 36%
Unfavorable 25%
Not sure 40%
- Q5** Do you have a favorable or unfavorable opinion of Mitt Romney?
Favorable..... 57%
Unfavorable 21%
Not sure 22%
- Q6** If the Republican candidates for President in 2012 were Newt Gingrich, Mike Huckabee, Sarah Palin, Ron Paul and Mitt Romney who would you support?
Newt Gingrich 21%
Mike Huckabee 23%
Sarah Palin 21%
Ron Paul..... 4%
Mitt Romney..... 22%
Someone else..... 2%
Undecided..... 7%
- Q7** Would you like to see the Republican nominee for President in 2012 be someone other than Newt Gingrich, Mike Huckabee, Sarah Palin, Ron Paul, or Mitt Romney?
Someone else..... 24%
One of these 5..... 54%
Not sure 22%
- Q8** Would you describe yourself as a liberal, moderate, or conservative?
Liberal..... 3%
Moderate..... 25%
Conservative..... 72%
- Q9** If you are a woman, press 1. If a man, press 2.
Woman 50%
Man..... 50%
- Q10** If you are 18 to 29 years old, press 1 now. If you are 30 to 45, press 2. If you are 46 to 65, press 3. If older, press 4.
18 to 29..... 4%
30 to 45..... 22%
46 to 65..... 58%
Older than 65..... 16%





Q11 How would you describe your current employment status? If you are employed full time, press 1. If you are employed part time, press 2. If you are unemployed and looking for work, press 3. If you are a student, press 4. If you are a homemaker, press 5. If other, press 6

Full Time..... 50%
Part Time 9%
Unemployed..... 6%
Student 1%
Homemaker 11%
Other..... 24%

Q12 Have you ever smoked Marijuana? If yes, press 1. If no, press 2. If you don't care to say, press 3.

Yes 21%
No..... 70%
N/A..... 9%





Crosstabs

	Base	Ideology		
		Liberal	Moderate	Conservative
Huckabee Favorability				
Favorable	62%	17%	44%	69%
Unfavorable	14%	42%	22%	10%
Not sure	25%	42%	33%	21%

	Base	Ideology		
		Liberal	Moderate	Conservative
Palin Favorability				
Favorable	76%	42%	49%	86%
Unfavorable	17%	25%	43%	8%
Not sure	7%	33%	7%	6%

	Base	Ideology		
		Liberal	Moderate	Conservative
Gingrich Favorability				
Favorable	65%	33%	47%	72%
Unfavorable	19%	33%	31%	14%
Not sure	16%	33%	21%	14%

	Base	Ideology		
		Liberal	Moderate	Conservative
Paul Favorability				
Favorable	36%	17%	26%	40%
Unfavorable	25%	33%	34%	21%
Not sure	40%	50%	39%	39%





Crosstabs

	Base	Ideology		
		Liberal	Moderate	Conservative
Romney Favorability				
Favorable	57%	25%	59%	58%
Unfavorable	21%	42%	22%	19%
Not sure	22%	33%	19%	22%

	Base	Ideology		
		Liberal	Moderate	Conservative
2012 GOP Pres Primary				
Newt Gingrich	21%	17%	14%	24%
Mike Huckabee	23%	17%	20%	24%
Sarah Palin	21%	8%	19%	22%
Ron Paul	4%	8%	7%	3%
Mitt Romney	22%	8%	27%	20%
Someone else	2%	8%	4%	1%
Undecided	7%	33%	8%	5%

	Base	Ideology		
		Liberal	Moderate	Conservative
Top 5 or Someone Else				
Someone else	24%	58%	30%	20%
One of these 5	54%	25%	49%	57%
Not sure	22%	17%	20%	23%

	Base	Gender	
		Woman	Man
Huckabee Favorability			
Favorable	62%	66%	57%
Unfavorable	14%	11%	18%
Not sure	25%	24%	26%





Crosstabs

	Base	Gender	
		Woman	Man
Palin Favorability			
Favorable	76%	76%	76%
Unfavorable	17%	17%	18%
Not sure	7%	8%	6%

	Base	Gender	
		Woman	Man
Gingrich Favorability			
Favorable	65%	59%	72%
Unfavorable	19%	20%	18%
Not sure	16%	22%	11%

	Base	Gender	
		Woman	Man
Paul Favorability			
Favorable	36%	34%	38%
Unfavorable	25%	21%	29%
Not sure	40%	46%	33%

	Base	Gender	
		Woman	Man
Romney Favorability			
Favorable	57%	62%	54%
Unfavorable	21%	15%	26%
Not sure	22%	24%	21%





Crosstabs

	Base	Gender	
		Woman	Man
2012 GOP Pres Primary			
Newt Gingrich	21%	14%	28%
Mike Huckabee	23%	27%	20%
Sarah Palin	21%	21%	21%
Ron Paul	4%	3%	5%
Mitt Romney	22%	25%	19%
Someone else	2%	1%	4%
Undecided	7%	10%	4%

	Base	Gender	
		Woman	Man
Top 5 or Someone Else			
Someone else	24%	19%	30%
One of these 5	54%	56%	52%
Not sure	22%	25%	19%

	Base	Age			
		18 to 29	30 to 45	46 to 65	Older than 65
Huckabee Favorability					
Favorable	62%	35%	61%	63%	65%
Unfavorable	14%	24%	10%	15%	14%
Not sure	25%	41%	29%	23%	21%

	Base	Age			
		18 to 29	30 to 45	46 to 65	Older than 65
Palin Favorability					
Favorable	76%	65%	77%	77%	71%
Unfavorable	17%	24%	13%	19%	16%
Not sure	7%	12%	10%	4%	13%





Crosstabs

	Base	Age			
		18 to 29	30 to 45	46 to 65	Older than 65
Gingrich Favorability					
Favorable	65%	41%	59%	67%	73%
Unfavorable	19%	18%	17%	20%	17%
Not sure	16%	41%	24%	13%	10%

	Base	Age			
		18 to 29	30 to 45	46 to 65	Older than 65
Paul Favorability					
Favorable	36%	18%	29%	37%	44%
Unfavorable	25%	41%	20%	26%	22%
Not sure	40%	41%	52%	36%	33%

	Base	Age			
		18 to 29	30 to 45	46 to 65	Older than 65
Romney Favorability					
Favorable	57%	59%	51%	58%	65%
Unfavorable	21%	18%	13%	23%	22%
Not sure	22%	24%	37%	19%	13%

	Base	Age			
		18 to 29	30 to 45	46 to 65	Older than 65
2012 GOP Pres Primary					
Newt Gingrich	21%	12%	20%	22%	22%
Mike Huckabee	23%	41%	31%	21%	16%
Sarah Palin	21%	24%	22%	21%	21%
Ron Paul	4%	12%	2%	4%	5%
Mitt Romney	22%	12%	14%	26%	21%
Someone else	2%	-	1%	1%	8%
Undecided	7%	-	10%	6%	8%





Crosstabs

	Base	Age			
		18 to 29	30 to 45	46 to 65	Older than 65
Top 5 or Someone Else					
Someone else	24%	12%	23%	25%	24%
One of these 5	54%	76%	54%	52%	57%
Not sure	22%	12%	23%	23%	19%

	Base	Employment Status					
		Full Time	Part Time	Unemployed	Student	Homemaker	Other
Huckabee Favorability							
Favorable	62%	60%	68%	55%	100%	67%	60%
Unfavorable	14%	15%	19%	14%	-	12%	12%
Not sure	25%	25%	14%	32%	-	21%	28%

	Base	Employment Status					
		Full Time	Part Time	Unemployed	Student	Homemaker	Other
Palin Favorability							
Favorable	76%	76%	70%	86%	50%	79%	74%
Unfavorable	17%	20%	24%	5%	50%	14%	13%
Not sure	7%	5%	5%	9%	-	7%	12%

	Base	Employment Status					
		Full Time	Part Time	Unemployed	Student	Homemaker	Other
Gingrich Favorability							
Favorable	65%	68%	62%	73%	-	51%	66%
Unfavorable	19%	20%	19%	9%	-	16%	21%
Not sure	16%	13%	19%	18%	100%	33%	13%





Crosstabs

	Base	Employment Status					
		Full Time	Part Time	Unemployed	Student	Homemaker	Other
Paul Favorability							
Favorable	36%	35%	30%	45%	50%	37%	37%
Unfavorable	25%	28%	19%	18%	-	14%	27%
Not sure	40%	37%	51%	36%	50%	49%	36%

	Base	Employment Status					
		Full Time	Part Time	Unemployed	Student	Homemaker	Other
Romney Favorability							
Favorable	57%	59%	65%	45%	100%	58%	54%
Unfavorable	21%	19%	19%	27%	-	19%	24%
Not sure	22%	22%	16%	27%	-	23%	23%

	Base	Employment Status					
		Full Time	Part Time	Unemployed	Student	Homemaker	Other
2012 GOP Pres Primary							
Newt Gingrich	21%	22%	22%	23%	-	5%	28%
Mike Huckabee	23%	25%	19%	18%	-	33%	18%
Sarah Palin	21%	22%	22%	23%	-	19%	21%
Ron Paul	4%	4%	5%	-	-	2%	5%
Mitt Romney	22%	22%	22%	18%	100%	28%	19%
Someone else	2%	2%	-	-	-	-	6%
Undecided	7%	5%	11%	18%	-	14%	4%

	Base	Employment Status					
		Full Time	Part Time	Unemployed	Student	Homemaker	Other
Top 5 or Someone Else							
Someone else	24%	27%	19%	27%	-	12%	25%
One of these 5	54%	52%	54%	64%	100%	56%	54%
Not sure	22%	21%	27%	9%	-	33%	22%





Crosstabs

	Base	Smoked Marijuana		
		Yes	No	N/A
Huckabee Favorability				
Favorable	61%	52%	64%	57%
Unfavorable	14%	16%	14%	14%
Not sure	25%	33%	22%	30%

	Base	Smoked Marijuana		
		Yes	No	N/A
Palin Favorability				
Favorable	76%	71%	78%	70%
Unfavorable	17%	27%	14%	19%
Not sure	7%	2%	8%	11%

	Base	Smoked Marijuana		
		Yes	No	N/A
Gingrich Favorability				
Favorable	65%	61%	67%	57%
Unfavorable	19%	27%	17%	19%
Not sure	16%	12%	16%	24%

	Base	Smoked Marijuana		
		Yes	No	N/A
Paul Favorability				
Favorable	36%	35%	37%	32%
Unfavorable	25%	33%	22%	24%
Not sure	39%	33%	41%	43%





Crosstabs

	Base	Smoked Marijuana		
		Yes	No	N/A
Romney Favorability				
Favorable	57%	52%	59%	57%
Unfavorable	21%	30%	19%	16%
Not sure	22%	18%	22%	27%

	Base	Smoked Marijuana		
		Yes	No	N/A
2012 GOP Pres Primary				
New t Gingrich	21%	22%	21%	19%
Mike Huckabee	23%	17%	24%	27%
Sarah Palin	21%	25%	21%	14%
Ron Paul	4%	8%	3%	-
Mitt Romney	22%	17%	23%	27%
Someone else	2%	2%	3%	-
Undecided	7%	8%	5%	14%

	Base	Smoked Marijuana		
		Yes	No	N/A
Top 5 or Someone Else				
Someone else	23%	30%	20%	30%
One of these 5	54%	49%	57%	49%
Not sure	22%	20%	23%	22%

